

START WITH **EXCELLENCE**
FINISH WITH **CONFIDENCE**



NEW AND IMPROVED SYSTEMS:

Now my mailing operation gives me even shorter setup times, better print quality and increased profitability.



ENVELOPE IMAGER XT 4.0

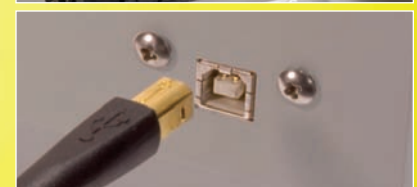
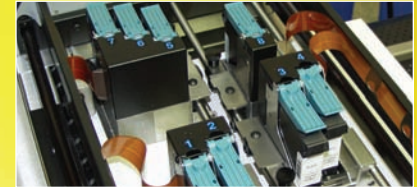


The Envelope Imaging Company*

ENVELOPE IMAGER XT 4.0



PRINT TECHNOLOGY	Thermal Inkjet, Eight HP 45A-Style High Capacity Cartridges		
ADDRESS SPEED	34,000 /hour at 150 dpi 25,000 /hour at 200 dpi 20,000 /hour at 300 dpi 11,000 /hour at 600 dpi (9 Lines on 4"x 6" Postcard)	26,000 /hour at 150 dpi 19,000 /hour at 200 dpi 15,000 /hour at 300 dpi 7,200 /hour at 600 dpi (9 Lines on #10 Envelopes)	
PRINT QUALITY (Dots Per Inch)	Description	Dots Per Inch	Resolution
	High Quality	600 d.p.i.	600 x 600 dpi
	Letter Quality	300 d.p.i.	600 x 300 dpi
	Standard Quality	200 d.p.i.	600 x 200 dpi
	Draft Quality	150 d.p.i.	600 x 150 dpi
IMAGE AREA	4" X 17" w/ 13" vertical range		
PRINT HEAD SPLIT	3 Pen Stitched + 2 Pen Stitched + 2 Pen Stitched + 1 Pen Design		
PROCESSOR	AMD TigerSharc 100 MHz DSP with Dual Calculation Technology		
PRINT ORIENTATION	Normal and Reverse		
FONTS	All TrueType fonts available on PC		
INK MONITOR	Visible on Display		
GRAPHICS, LOGOS, AND BARCODES	Allows printing of graphics, logos, and barcodes		
MATERIAL SIZE	Length – 5" to 17" ■ Width – 3" to 13.5"		
MATERIAL THICKNESS	Up to 3/8"		
FEEDER	In-line design works with various input devices		
FEEDER INTERFACE	Start-Stop Control		
TRANSPORT TYPE	Five Channel AccuTrak Vacuum Transport with Repositionable Outer Belts/Side Guides		
VACUUM TYPE	Through-the-Belt Triple Pancake Fans with On/Off Control		
SOFTWARE	Windows™ Printer Drivers for Windows™ 98, 2000, NT, ME, and XP		
PC INTERFACE	Centronics Parallel and USB 2.0		
DIAGNOSTICS	Resident in firmware		
FIRMWARE UPDATE	Flash PROM update		
DUTY CYCLE	120 million addresses total or 2,000,000 per month over a 5-year life cycle		
DIMENSIONS	11.5" H x 30" L x 23" W (292 mm H x 762 mm L x 584 mm W)		
WEIGHT	90 lbs. (40.9 kg)		
ELECTRICAL	115VAC or 240VAC, 50/60 Hz		
OPTIONS	EASYFeed Feeders, T-750/T-950 In-line Tabbers, XPS-ProFeed Feeders, Conveyor/Stacker/Dryer, Right-2-Left Configuration		
COUNTERS	One operator resettable job counter, one permanent lifetime counter		
MEMORY	64MB		



The RENA Systems Envelope Imager XT 4.0 has horsepower. It has all the features of the XT 3.0 with a larger 4" print area. Split over four separate print modules for unprecedented coverage and extreme flexibility. Eight HP 45A-style high capacity cartridges and TrueType fonts provides options for adding attention lines, postal barcodes, return addresses and indicia at the same time. The Envelope Imager XT 4.0 is fast and tireless, producing superior results at production speeds of over 34,000 postcards or 26,000 #10 envelopes/hr.

Supporting this output is the AccuTrak Transport – a wide center belt with a powerful vacuum assist that keeps pieces in place through transport. Outer transport belts can be customized to the size of the mail piece.

The XT 4.0 accepts materials up to 3/8" thick and runs in-line with RENA Systems T-750 and T-950 tabbers. Cartridge capping stations are standard. Storing inkjet cartridges increases their yield by keeping them fresh in a special station.

KEY FEATURES

- **4" high print area from four individual print heads for maximum coverage/versatility**
- **Prints speeds of 34,000 postcards/hr**
- **Runs in-line with RENA Systems T-750 and T-950 tabbers**
- **Five-Channel AccuTrak Transport with repositionable belts**
- **Integrated cartridge storage system**

AUTHORIZED RENA SYSTEMS DEALER:



136 Green Tree Road
PO Box 1069
Oaks, PA 19456-1069
Toll Free: 888.444.7362



www.renausa.com